

1520
(1303.4)
1530
1540
(1319.1)
1550
1560
(1334.9)
1570
1580
(1351.9)
1590
1600
(1369.2)
1610
1620
(1386.9)
1630
1640
(1404.9)
1650

WOB:5-25
TDRPM:60
MMRPM:173
SPP:2000
FLW:595

WOB:5-8
TDRPM:60
MMRPM:173
SPP:2100
FLW:595

WOB:5-25
TDRPM:60
MMRPM:173
SPP:2200
FLW:595

WOB:5-25
TDRPM:30

MW: 10.0
FV: 60
PV: 22
YP: 28
Gel: 7/11
WI: 3.4
pH: 10.60
Cl: 38k

Cond:

Survey:1531.94mMD (1311.9mTVD)
40.72°inc 253.98°az

100 / Tr / Tr

Survey:1561.54mMD (1335.3mTVD)
34.65°inc 246.81°az

100 / Tr

Survey:1589.77mMD (1359.3mTVD)
28.88°inc 243.32°az

5 5 50 500 5K
100 1K 10K 100K 1000K

100% Cl

Survey:1618.63mMD (1384.8mTVD)
27.44°inc 243.14°az

Survey:1647.34mMD (1410.6mTVD)
24.60°inc 242.51°az

100 / Tr

GAS ANALYSIS BY GEOSERVICES
GP-FID SYSTEM, FGP/FCP GAS
PANELS. GZ11 DEGASSER IN
POSSUM BELLY.

CALCAREOUS CLAYSTONE: med gy-
med dk gy, slty, mod calc, tr dissem
pyr, rr foss frag, frm-mod hd,
sbbiky-biky.

CALCAREOUS CLAYSTONE: med gy-
med dk gy, slty, mod calc, tr dissem
pyr, rr foss frag, rr glauc, frm-mod hd,
sbbiky-biky.

CALCAREOUS CLAYSTONE: med It
gy-med gy, slty, mod calc, tr dissem
pyr, rr foss frag, frm-mod hd,
sbbiky-biky.

CALCAREOUS CLAYSTONE: med It
gy-med gy, slty, mod calc, tr dissem
pyr, rr foss frag, frm-mod hd,
sbbiky-biky.

MMRPM:173
SPP:2250
FLW:595

1660

(1423.2)

1670

1680

(1441.8)

1690

1700

(1460.7)

1710

1720

(1479.8)

1730

1740

(1498.9)

1750

1760

(1518.1)

1770

1780

(1537.4)

1790

WOB:5-8
TDRPM:55
MMRPM:174
SPP:2300
FLW:600

WOB:7-11
TDRPM:110
MMRPM:175
SPP:2200
FLW:600

MW: 9.8
FV: 62
PV: 28
YP: 24
Gel: 7/12
WI: 3.1
pH: 8.20

Survey:1674.35mMD (1435.5mTVD)
20.82°inc 242.73°az

100 / Tr / Tr

Survey:1704.39mMD (1463.9mTVD)
17.19°inc 246.18°az

Survey:1733.75mMD (1492.0mTVD)
16.54°inc 246.45°az

99 / 1 / Tr

Survey:1762.64mMD (1519.7mTVD)
16.18°inc 246.39°az

98 / 2 / Tr

Survey:1791.14mMD (1547.1mTVD)
15.92°inc 246.67°az

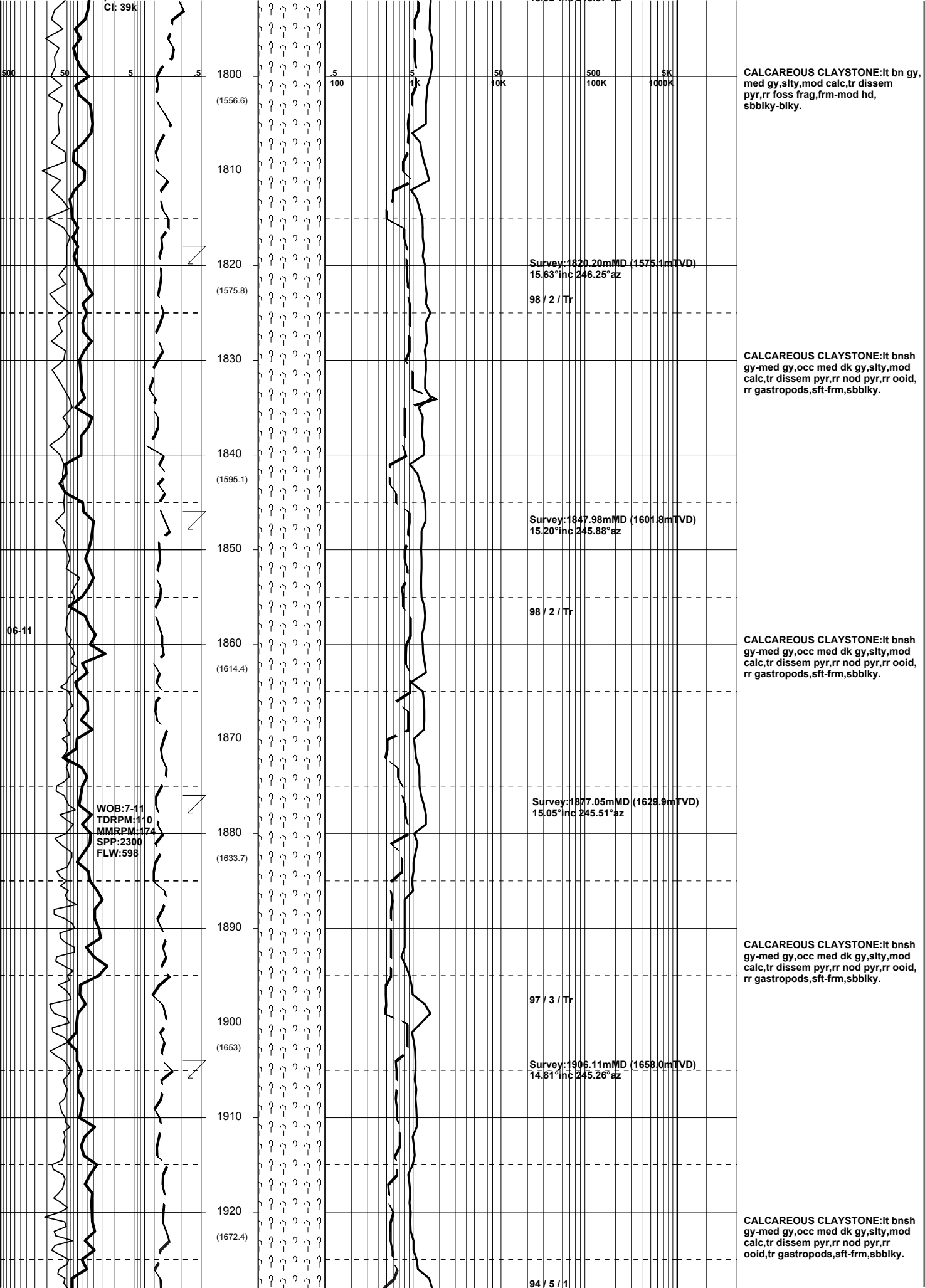
CALCAREOUS CLAYSTONE:med lt
gy-med gy,slty,mod calc,tr dissem
pyr,rr foss frag,frm-mod hd,
sbbiky-biky.

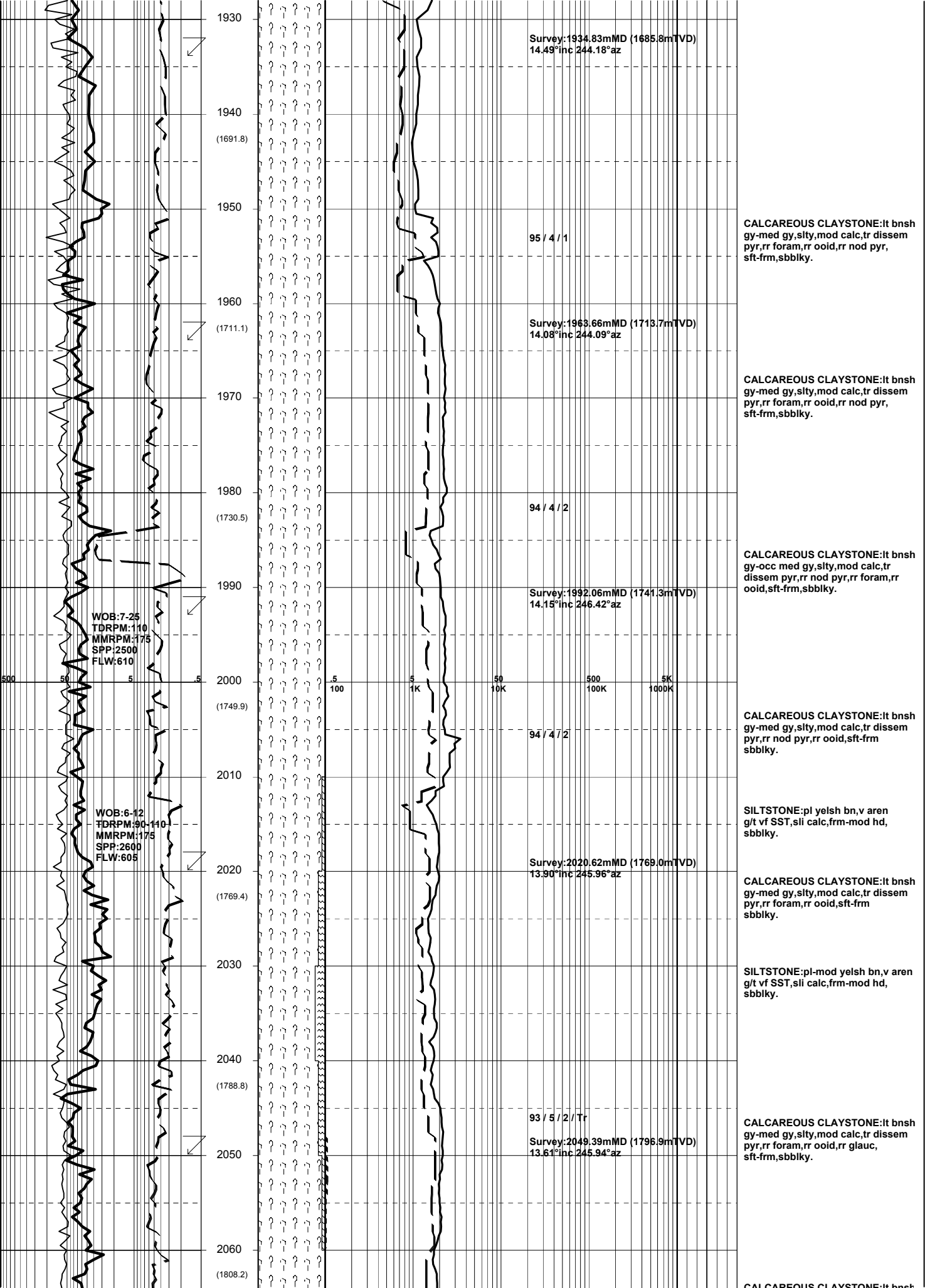
GAS ANALYSIS BY GEOSERVICES
GP-FID SYSTEM, FGP/FCP GAS
PANELS. GZG DEGASSER IN FLOW
TROUGH FROM 1698.0m MDRT.

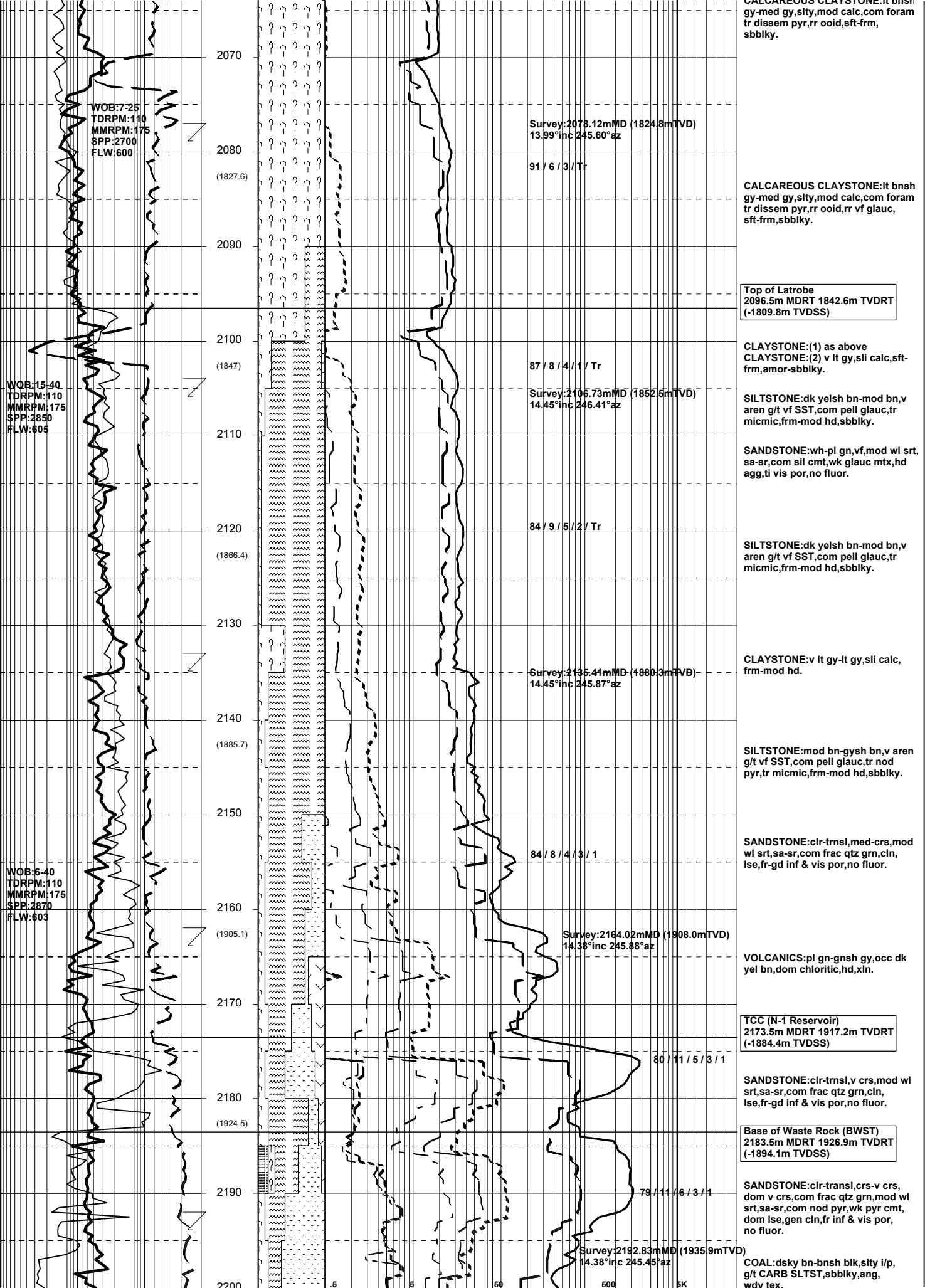
CALCAREOUS CLAYSTONE: lt bnsh
gy-med gy,slty,mod calc,tr dissem
pyr,rr foss frag,frm-mod hd,
sbbiky-biky.

CALCAREOUS CLAYSTONE:lt bnsh
gy-med gy,slty,mod calc,tr dissem
pyr,rr foss frag,frm-mod hd,
sbbiky-biky.

CALCAREOUS CLAYSTONE:lt bnsh
gy-med gy,slty,mod calc,tr dissem
pyr,rr foss frag,frm-mod hd,
sbbiky-biky.







WOB: 7-25
TDRPM: 110
MMRPM: 175
SPP: 2700
FLW: 600

Survey: 2078.12mMD (1824.8mTVD)
13.99°inc 245.60°az

91 / 6 / 3 / Tr

CALCAREOUS CLAYSTONE: lt bnsh gy-med gy, slty, mod calc, com foram tr dissem pyr, rr oid, sft-frm, sbbkly.

Top of Latrobe
2096.5m MDRT 1842.6m TVDRT
(-1809.8m TVDSS)

CLAYSTONE: (1) as above
CLAYSTONE: (2) v lt gy, sli calc, sft-frm, amor-sbbkly.

WOB: 15-40
TDRPM: 110
MMRPM: 175
SPP: 2850
FLW: 605

Survey: 2106.73mMD (1852.5mTVD)
14.45°inc 246.41°az

87 / 8 / 4 / 1 / Tr

SILTSTONE: dk yelsh bn-mod bn, v aren g/t vf SST, com pell glauc, tr micmic, frm-mod hd, sbbkly.

SANDSTONE: wh-pl gn, vf, mod wl srt, sa-sr, com sli cmt, wk glauc mtx, hd agg, ti vis por, no fluor.

WOB: 6-40
TDRPM: 110
MMRPM: 175
SPP: 2870
FLW: 603

Survey: 2135.41mMD (1880.3mTVD)
14.45°inc 245.87°az

84 / 9 / 5 / 2 / Tr

SILTSTONE: dk yelsh bn-mod bn, v aren g/t vf SST, com pell glauc, tr micmic, frm-mod hd, sbbkly.

CLAYSTONE: v lt gy-lt gy, sli calc, frm-mod hd.

SILTSTONE: mod bn-gysh bn, v aren g/t vf SST, com pell glauc, tr nod pyr, tr micmic, frm-mod hd, sbbkly.

84 / 8 / 4 / 3 / 1

SANDSTONE: clr-trnsl, med-crs, mod wl srt, sa-sr, com frac qtz grn, clin, lse, fr-gd inf & vis por, no fluor.

Survey: 2164.02mMD (1908.0mTVD)
14.38°inc 245.88°az

VOLCANICS: pl gn-gnsh gy, occ dk yel bn, dom chloritic, hd, xln.

TCC (N-1 Reservoir)
2173.5m MDRT 1917.2m TVDRT
(-1884.4m TVDSS)

80 / 11 / 5 / 3 / 1

SANDSTONE: clr-trnsl, v crs, mod wl srt, sa-sr, com frac qtz grn, clin, lse, fr-gd inf & vis por, no fluor.

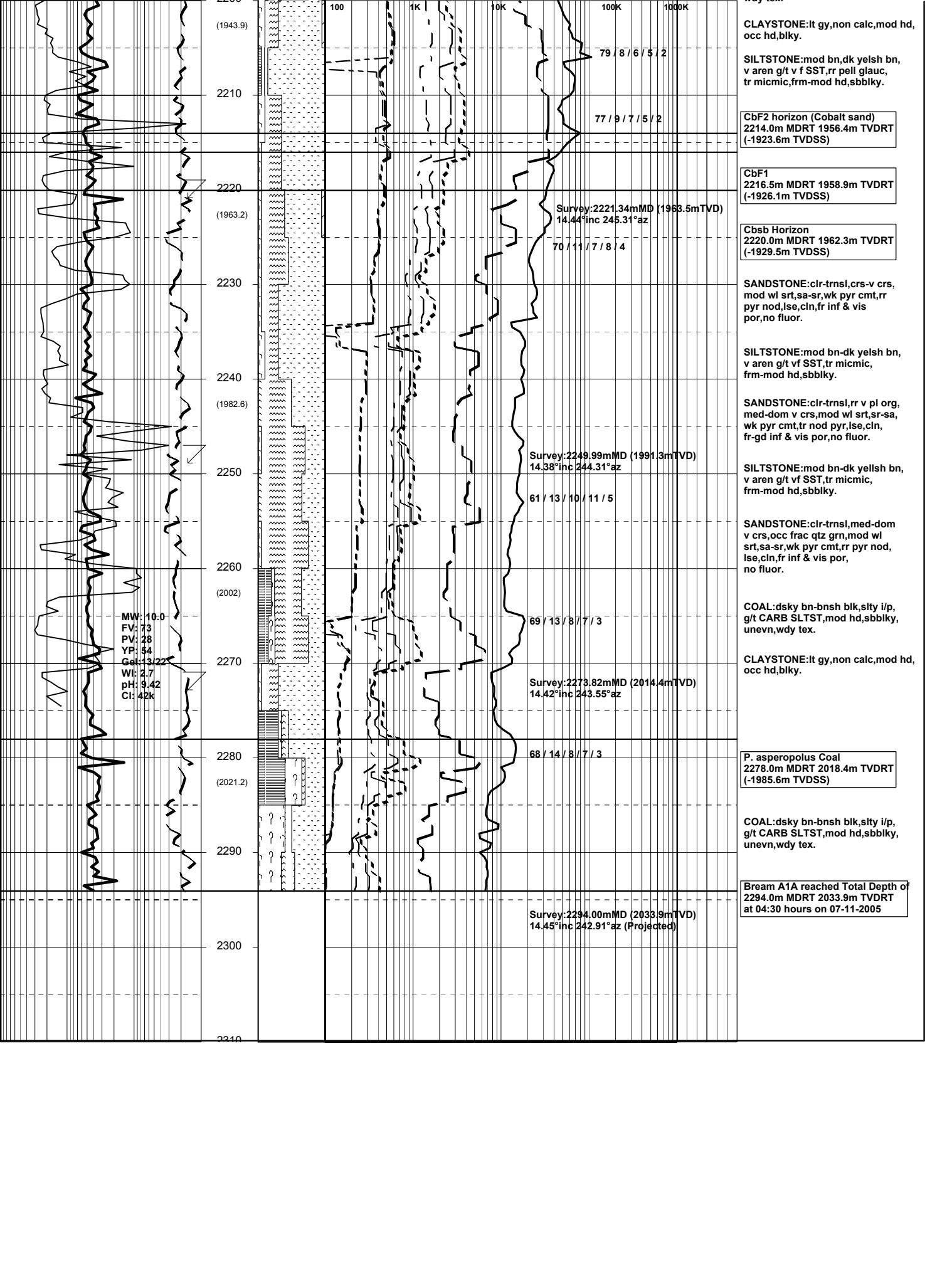
Base of Waste Rock (BWST)
2183.5m MDRT 1926.9m TVDRT
(-1894.1m TVDSS)

79 / 11 / 6 / 3 / 1

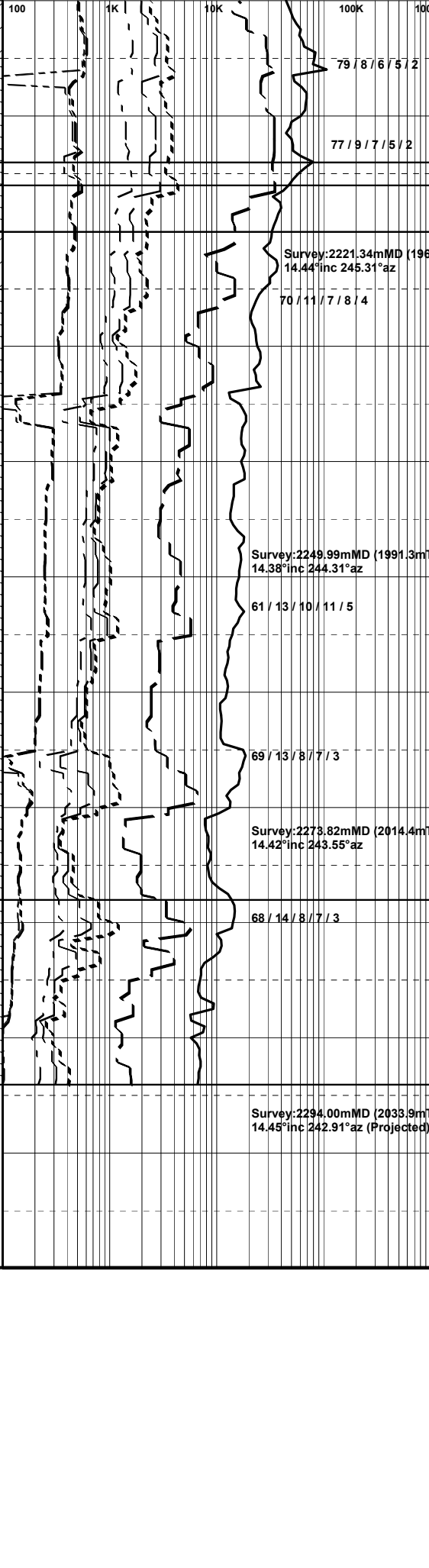
SANDSTONE: clr-trnsl, crs-v crs, dom v crs, com frac qtz grn, mod wl srt, sa-sr, com nod pyr, wk pyr cmt, dom lse, gen clin, fr inf & vis por, no fluor.

Survey: 2192.83mMD (1935.9mTVD)
14.38°inc 245.45°az

COAL: dsky bn-bnsh blk, slty i/p, g/t CARB SLTST, sbbkly, ang, wdv tex.



2200
(1943.9)
2210
(1963.2)
2220
(1982.6)
2230
2240
(1982.6)
2250
2260
(2002)
2270
2280
(2021.2)
2290
2300
2310
2320
2330
2340



Survey: 2221.34mMD (1963.5mTVD)
14.44°inc 245.31°az

79 / 8 / 6 / 5 / 2

77 / 9 / 7 / 5 / 2

Survey: 2229.99mMD (1991.3mTVD)
14.38°inc 244.31°az

61 / 13 / 10 / 11 / 5

Survey: 2273.82mMD (2014.4mTVD)
14.42°inc 243.55°az

69 / 13 / 8 / 7 / 3

68 / 14 / 8 / 7 / 3

Survey: 2294.00mMD (2033.9mTVD)
14.45°inc 242.91°az (Projected)

MW: 10-0
FV: 73
PV: 28
YP: 54
Gel: 13.22
WI: 2.7
pH: 9.42
Cl: 42k

CLAYSTONE:lt gy,non calc,mod hd, occ hd,blky.

SILTSTONE:mod bn,dk yelsh bn, v aren g/t v f SST,rr pell glauc, tr micmic,frm-mod hd,sbbkly.

CbF2 horizon (Cobalt sand)
2214.0m MDRT 1956.4m TVDRT (-1923.6m TVDSS)

CbF1
2216.5m MDRT 1958.9m TVDRT (-1926.1m TVDSS)

Cbsb Horizon
2220.0m MDRT 1962.3m TVDRT (-1929.5m TVDSS)

SANDSTONE:clr-trnsl,crs-v crs, mod wl srt,sa-sr,wk pyr cmt,rr pyr nod,lse,cln,fr inf & vis por,no fluor.

SILTSTONE:mod bn-dk yelsh bn, v aren g/t vf SST,rr micmic, frm-mod hd,sbbkly.

SANDSTONE:clr-trnsl,rr v pl org, med-dom v crs,mod wl srt,sr-sa, wk pyr cmt,rr nod pyr,lse,cln, fr-gd inf & vis por,no fluor.

SILTSTONE:mod bn-dk yelsh bn, v aren g/t vf SST,rr micmic, frm-mod hd,sbbkly.

SANDSTONE:clr-trnsl,med-dom v crs,occ frac qtz grn,mod wl srt,sa-sr,wk pyr cmt,rr pyr nod, lse,cln,fr inf & vis por, no fluor.

COAL:dsky bn-bnsh blk,sity i/p, g/t CARB SLTST,mod hd,sbbkly, unev,wdy tex.

CLAYSTONE:lt gy,non calc,mod hd, occ hd,blky.

P. asperopolus Coal
2278.0m MDRT 2018.4m TVDRT (-1985.6m TVDSS)

COAL:dsky bn-bnsh blk,sity i/p, g/t CARB SLTST,mod hd,sbbkly, unev,wdy tex.

Bream A1A reached Total Depth of
2294.0m MDRT 2033.9m TVDRT at 04:30 hours on 07-11-2005